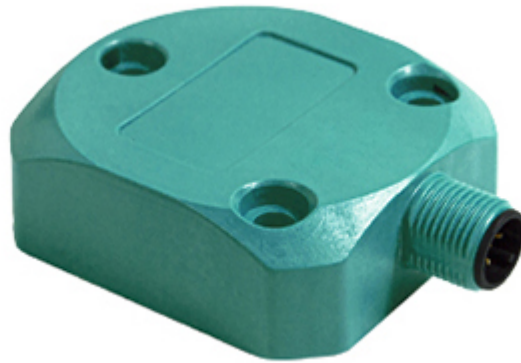


## TILTIX Inclinometer

### ACS-080-2-AC00-HE3-PM



#### General Specifications

Application	2-Axes Position Monitoring and Leveling
Measurement Range	$\pm 80^\circ$
Absolute Accuracy	$\pm 0.10^\circ$ (within $\pm 60^\circ$ range)
Resolution	0.01°

#### Electrical Specifications

Supply Voltage	10 - 30 VDC
Power Consumption (no load)	$\leq 0.7$ W
EMC: Emitted Interference	DIN EN 61000-6-4
EMC: Noise Immunity	DIN EN 61000-6-2
Reverse Polarity Protection	Yes
Short Circuit Protection	Yes
MTTF	400 years @ 40 °C

#### Environmental Specifications

Operating Temperature	-40 °C (-40 °F) - +85 °C (+185 °F)
Storage Temperature	-40 °C (-40 °F) - +85 °C (+185 °F)
Temperature Gradient	0.004°/ K
Protection Class	IP66/IP67
Shock Resistance	$\leq 100$ g (half sine 6 ms, EN 60068-2-27)

Data Sheet

Printed at 22-09-2023 10:09

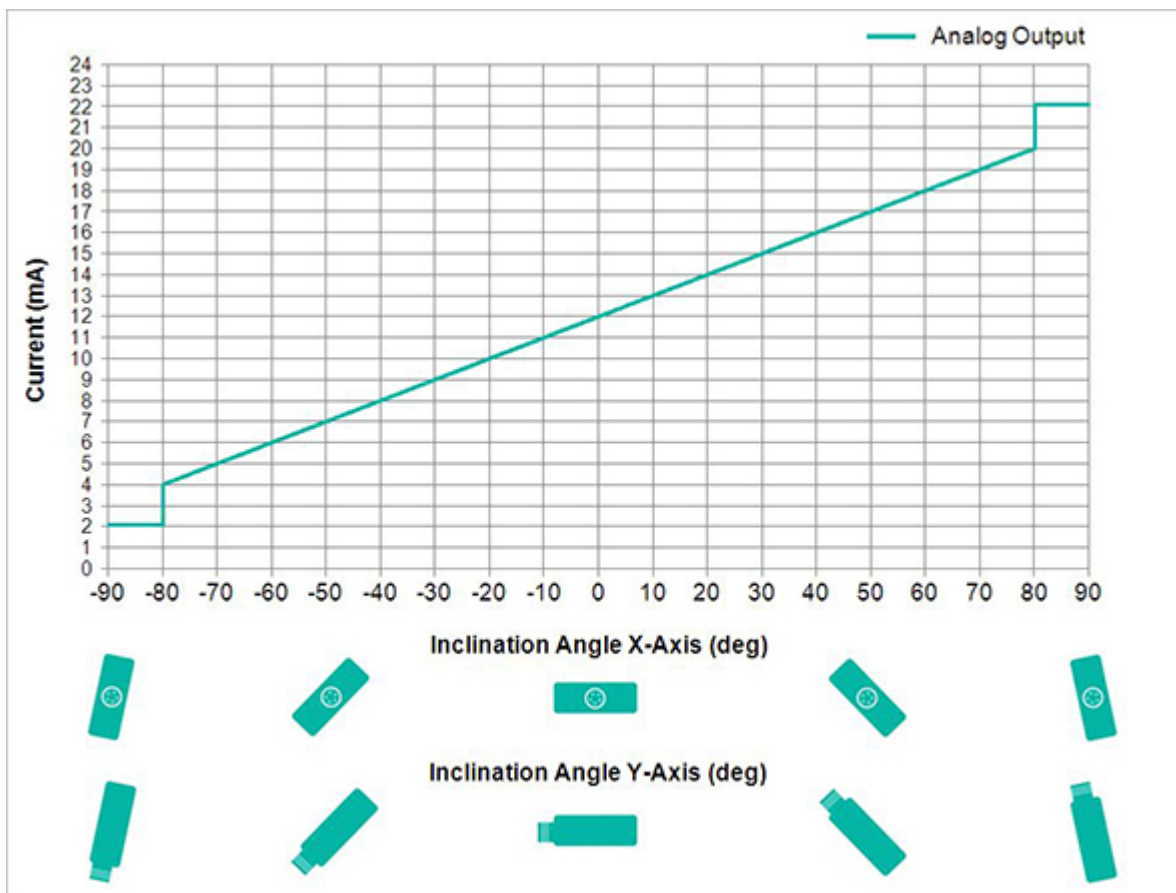
Vibration Resistance	1.5 mm (10 Hz - 58 Hz) & $\leq 20$ g (58 Hz to 2000 Hz)
----------------------	---

### Mechanical Specifications

Housing Material	Fibre-Reinforced PBT (Polybutylene Terephthalate)
Potting Material	None
Weight	100 g (0.22 lb)

### Interface

Interface	Analog Current 4 - 20 mA
Settling Time	min 30 ms; default 200 ms (dependent on filter settings)
Output Type	Current 4 - 20 mA
Max Load Resistance	270 $\Omega$ @ 10 V DC (500 $\Omega$ @ 15 V DC)
Linearity	$\pm 0.02\%$



### Electrical Connection

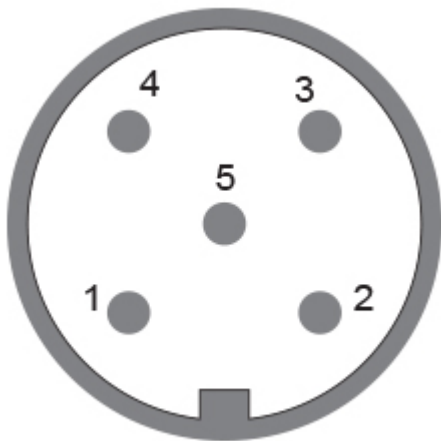
Connection Type	Connector M12 (5 pin)
Connector	M12, Male, 5 pin, a coded

### Product Life Cycle

Product Life Cycle	New
--------------------	-----

### Certification

Approval	CE
----------	----



### Connection Plan

SIGNAL	PIN NUMBER
Power Supply	1
GND	3
X-Axis, Current Output	4
Y-Axis, Current Output	2
Set1	5

### Dimensional Drawing

[2D Drawing](#)

### Accessories

Connectors & Cables  
M12, 5pin A-Coded, Male  
5m PUR Cable, 5pin, A-Coded, f

Data Sheet  
Printed at 22-09-2023 10:09



2m PUR Cable, 5pin, A-Coded, f  
Angled M12, 5pin A-Coded, Female  
2m PUR Cable, 5pin, A-Coded, m  
10m PUR Cable, 5pin, A-Coded, f  
5m PUR Cable, 5pin, A-Coded, m  
POS M12 5pin-A Female+5m PUR Cable  
10m PUR Cable, 5pin, A-Coded, m  
POS M12 5pin-A Female+2m PUR Cable  
POS M12 5pin-A Female+10m PUR Cable  
M12, 5pin A-Coded, Female  
More  
Displays  
AP22-D0 Analog Display (4 dig. o/p)  
DiMod-A Analog Display

**Got questions? Need an individual solution? We are here to help!**



Contact Us

All dimension in [inch] mm. This drawing and the information contained is for general presentation purposes only. Please refer to the "Download" section for detailed technical drawings. © FRABA B.V., All rights reserved. We do not assume responsibility for technical inaccuracies or omissions. Specifications are subject to change without notice.